

Individual Decision

The attached report(s) will be taken as
Individual Portfolio Member Decision(s) on:

Tuesday, 25th January, 2011

Ref:	Title	Portfolio Member(s)	Page No.
ID2075	Brightwalton Parish Plan	Councillor Pamela Bale	1 - 30



This page is intentionally left blank

Individual Executive Member Decision

Title of Report:	Brightwalton Parish Plan
Report to be considered by:	Individual Executive Member Decision
Date on which Decision is to be taken:	25 January 2011
Forward Plan Ref:	ID2075

Purpose of Report: To seek adoption of the Brightwalton Parish Plan by the council

Recommended Action: The Plan be formally adopted by the Council as an important document

Reason for decision to be taken: Formal adoption of the Parish Plan

Statutory: **Non-Statutory:**
Other:

Other options considered: None

Key background documentation: Brightwalton Parish Plan

Portfolio Member Details	
Name & Telephone No.:	Councillor Pamela Bale - Tel (0118) 9842980
E-mail Address:	pbale@westberks.gov.uk
Contact Officer Details	
Name:	Jo Naylor
Job Title:	Principle Policy Officer
Tel. No.:	01635 503019
E-mail Address:	jnaylor@westberks.gov.uk

DRAFT DOCUMENT

Implications

Policy:	Parish Plans are an integral part of the Council's Vibrant Villages theme within the Council Plan
Financial:	<p>There are no specific financial implications arising from this report at this stage. Any of the actions in the Parish Plan that have financial implications for services will need to be addressed as and when those actions are moved forward. If actions require additional resources these will be brought to Members for consideration in due course.</p> <p>If there are any financial implications contained within this report this section must be signed off by a West Berkshire Group Accountant. Please note that the report cannot be accepted by Policy and Communication unless this action has been undertaken.</p>
Personnel:	There are no personnel implications at this stage
Legal/Procurement:	There are no direct legal implications at this stage
Environmental:	Parish Plans often raise many local environmental issues and as such can play a very useful role in conserving and enhancing the environment at a very local level.
Partnering:	Parish Plans are an excellent example of partnering between the local community and the Council.
Property:	No specific property implications. Any property related matters within the action plan will be addressed by the relevant service as and when the action is moved forward by the community in conjunction with the Council.
Risk Management:	There are no direct risk management issues arising from the plan. As and when actions are moved forward any risk issues will be addressed by the relevant service area.
Community Safety:	There are no specific or direct Community Safety implications.
Equalities:	<p>The consultation carried out in support of the Parish Plan helps ensure that all people have an opportunity to have their views and concerns heard.</p> <p>Where a decision is required, Policy and Communication are not able to accept your report without an EIA being completed. These should be sent to P&C along with your report and should be copied to the Principal Policy Officer (Equality & Diversity). For advice please contact Principal Policy Officer (Equality & Diversity) on Ext. 2441.</p>

Consultation Responses

Members:	
Leader of Council:	Councillor Graham Jones
Overview & Scrutiny Management Commission Chairman:	Councillor Brian Bedwell

DRAFT DOCUMENT

Select Committee Chairman: Councillor Emma Webster
Councillor Geoff Findlay
Councillor Irene Neill
Councillor Quentin Webb

Ward Members: Councillor George Chandler
Opposition Spokesperson: Councillor Jeff Brooks

Local Stakeholders: WBC, GCT, Safer Communities Partnership, Voluntary Sector

Officers Consulted: Senior Management within WBC

Trade Union: N/A

NOTE: The section below does not need to be completed if your report will not progress beyond Corporate or Management Board.

Is this item subject to call-in.	Yes: <input checked="" type="checkbox"/>	No: <input type="checkbox"/>
If not subject to call-in please put a cross in the appropriate box:		
The item is due to be referred to Council for final approval		<input type="checkbox"/>
Delays in implementation could have serious financial implications for the Council		<input type="checkbox"/>
Delays in implementation could compromise the Council's position		<input type="checkbox"/>
Considered or reviewed by OSC or associated Task Groups within preceding 6 months		<input type="checkbox"/>
Item is Urgent Key Decision		<input type="checkbox"/>

DRAFT DOCUMENT

Supporting Information

1. Background

- 1.1 Since December 2008 Community Led Plans (or Parish Plans) have been formally endorsed by West Berkshire Council, via the Individual Decision process.
- 1.2 The endorsement of a Parish Plan means that the Council commits to working positively with the community to realise the vision set out in the plan. This means that the Council will give approval or sanction, where it can, actions that have the support of the community and have been included in the Parish Plan Action Plan. This is subject to the draft Action Plan having been circulated to the Council and its Partners by prior agreement and the actions discussed in consultation with the Principal Policy Officer for Community Planning.

Community Planning In West Berkshire

- 1.3 West Berkshire Council, working alongside other key partners from the Local Strategic Partnership such as the Community Council for Berkshire and the local community, has promoted the development of Community Planning across the District.
- 1.4 The Council's success in pushing forward this work has been recognised nationally; firstly through the award of Beacon Status for the local authority in 2006 as part of the "Empowering Communities Improving Rural Services" theme and subsequently through the successful joint local authorities bid to the national Beacon Peer mentoring fund, which the Council led, to further develop work in Community Planning.
- 1.5 Parish Plans are key documents that set out a vision for how a community wishes to develop in the future. They contain an action plan that will help to realise that vision.
- 1.6 Parish Plans are developed through a wide ranging consultation process with the local community. This helps ensure that the resulting plan reflects the needs and aspirations of local people. The Plans are therefore an important source of intelligence about the views and concerns of the community as well as highlighting specific actions that communities wish to see taken in their areas. This information plays an important part in shaping both service planning and delivery across the Council but is increasingly being used to inform Council strategy and policy development.
- 1.7 The process by which Parish Plans are developed involves extensive liaison and engagement with service providers and statutory organisations, most especially the Council. This close involvement and dialogue helps ensure that officers are aware of the direction and aspirations of the community and can help develop meaningful and realistic actions.

DRAFT DOCUMENT

- 1.8 This close engagement between the Council and the community at a very practical level helps to provide an excellent platform for improving relationships and communications between the local authority and the communities it serves.
- 1.9 A further benefit emerging from Community Planning is that it has helped bring communities and organisations together to focus on developing solutions to local problems, for example; joint working on environmental issues, such as noise from the M4; allotment provision; growing food locally and development of local business groups.
- 1.10 The Brightwalton Parish Plan was originally endorsed in May 2004 and the attached document now refreshes the Parish Plan and Action Plan with new priorities.
- 1.11 The action plan is built around the 5 themes of the sustainable community strategy. This provides an ideal focus for the plan and helps develop clear links between local activities and the overall strategic vision for the district.

2. Recommendations

- 2.1 It is RECOMMENDED that the Plan be formally adopted by the Council as an important document.

Appendices

Appendix: Brightwalton Plan and Action Plan

This page is intentionally left blank



BRIGHTWALTON PARISH PLAN
REFRESH
2010 - 2015

Contents

The Parish Plan at a glance.....	2
Key questionnaire findings.....	2
Village views.....	3
Guiding Principles.....	4
The Parish Plan in detail.....	5
What's happened since the 2004 plan?.....	5
The Action Plan 2010 - 2015	6
How you can help	6
1. A Stronger Community.....	7
2. A Greener Community.....	11
3. A Safer Community	12
4. A Healthy Community.....	13
5. A Prosperous Community	13
Appendix.....	14
The Refresh process	14
Acknowledgements.....	14
Want to volunteer or get more information?.....	14

The Parish Plan at a glance

Key questionnaire findings

The Parish Plan refresh has been guided by feedback from the Brightwalton Parish Plan questionnaire.

In general, people seem very happy with life in Brightwalton. Once here, they find very many things to like about the village - the community spirit, rural setting, the "peace and quiet" and the location (within beautiful countryside but within reach of larger towns, motorways and London).

-
- The two main reasons people cite for moving to the parish are the local countryside and their specific house.
 - The great majority of us (84%) feel that we are part of the parish.
 - Over two thirds plan to stay in the village for the next five years – the life of the refreshed plan.
 - Communication is good or adequate and the Brickleton News is read by nearly everyone.
 - Virtually everyone feels safe or generally safe.
 - There was generally positive feedback about new developments, Dunmore Meadow in particular, and a lot of support for the development of a Village Design Statement.
 - The growing use of the internet in all aspects of our lives is reflected in the great support for achieving faster broadband for education, leisure and work.
 - We are also very enthusiastic about investigating ways to make the village greener through renewable energy initiatives, community tree planting and country conservation projects.
 - A substantial number of us wish there was a parish "heart" (pub or shop). This is reflected in the interest in new activities, which could bring us together on an occasional basis.
 - Speeding and road maintenance, in general, remain major issues.
-

"Friendly and peaceful, stunning views and beautiful walks"

"Wonderful place to bring up children"

"The effort put in by the various bodies/committees in the village to facilitate a closer community for the benefit of all"

"There is no 'heart' to the village, such as a pub or even a small shop"

Village views

What we like	What we don't like
<p>Strong community spirit & cooperation; support of friends and neighbours</p> <p>The environment: countryside, 'peace & quiet', views, walks, no street lighting in most of the parish</p> <p>Sense of safety</p> <p>Facilities for young children: good school, nursery, play area, clubs & activities, safe, countryside</p> <p>Low traffic levels in main parts of village</p> <p>No large-scale development and mostly sympathetic</p> <p>Low cost housing</p>	<p>Lack of a centre or heart to the parish (e.g. shop / pub etc.)</p> <p>Roads and verges: maintenance, speeding at certain times and on some roads e.g. B4494</p> <p>Very low levels of employment within the parish itself</p> <p>Broadband speeds</p> <p>A feeling of disconnect with West Berkshire Council (e.g. poor communication, not listening to local opinion in planning decisions, road maintenance e.g. snow clearance)</p>
Good things we can improve further	What we're concerned about for the future
<p>Find ways to engage those who only feel part of the parish 'to a certain extent' and those who would like to feel more a part of it</p> <p>Capitalise on the participation on Fete day to ensure the Fete's future and find ways to extend this participation to other events (e.g. Xmas Fayre)</p> <p>Create more occasional social / leisure activities rather than regular clubs or groups</p> <p>Make everyone aware of the services available to maximise their use and make sure we keep them</p> <p>Explore new community services eg oil syndicate, conservation activities, community fruit trees etc</p> <p>Make sure people know about events and the activities of the Parish Council and other committees</p>	<p>Currently 7/91 respondents who responded don't care about being part of the community; many didn't respond.. Others expressed concerns that the sense of community is decreasing. How do we maintain and build community spirit?</p> <p>Existing services are already limited but if they are not used these too will decline over time</p> <p>Lack of employment within the parish increases transport needs and impacts the parish economy</p> <p>We are increasingly reliant on cars</p> <p>Most of us currently feel safe but survey feedback suggests concerns for safety are increasing e.g. regarding burglaries</p> <p>Control over who has the right to a low cost house and concern that those with local connections are not given priority</p> <p>West Berkshire Council makes decisions about Brightwalton without taking into account local views</p>

Guiding Principles

The refresh process has given guidance as to what is important to us. These guiding principles should steer us in our decision-making and actions affecting Brightwalton and its surrounding countryside, for instance planning, change and development or the provision of services, activities and facilities. They should be used by official bodies, voluntary groups and individuals whose decisions impact the Brightwalton environment and community.



People like the quality of life in Brightwalton with its rural setting, views, peaceful character and community spirit. We like sympathetic improvements not wholesale development or change.

Preservation and management of the natural environment within and surrounding Brightwalton is a priority for preserving the character of the parish for future generations.

There is a sense of community in the parish which we want to strengthen. However, it is an accepted fact of modern rural life that people will travel out of the village for employment, shopping, entertainment and education after primary school. Therefore, we need to work hard to enhance communication, to bring people together and to provide mutual support to keep this sense of community.

Some people in the village are more dependent on local services, such as those without transport or with greater needs (e.g. the elderly). The parish should work to ensure that these groups enjoy the same quality of life as those who are more mobile.

The parish needs to be vigilant about maintaining and enhancing our strong sense of security, including road safety, road maintenance and crime.

Why have a Parish Plan?

A Parish Plan looks ahead for 20 years to identify the needs of the parish and to create and implement an action plan that enhances life in the village.

West Berkshire Council encourages communities to develop and maintain a Parish Plan. Applications for funding typically have more success if we can show they meet a need identified in our Plan.

Brightwalton Parish Plan refresh timeline

2004 Brightwalton Parish Plan published.

West Berkshire Council encourages parishes to refresh and update their plans to reflect progress and changes in the community.

Sept 2009 - Spring 2010 Brightwalton volunteers canvassed opinion.

Summer 2010 Parish-wide questionnaire distributed. Responses directly informed the development of the Parish Plan refresh.

December 2010 Refreshed Plan published covering years 2010 – 2015.

This Parish Plan Refresh should be read in conjunction with the 2004 Brightwalton Parish Plan.

It contains both high level principles to guide actions and policy decisions together with initial actions to launch development.

The Parish Plan in detail

What's happened since the 2004 plan?

As a result of the 2004 Parish Plan the parish has gained grants worth over £10,000 (excluding funding for affordable housing). This has enabled the parish to address seven specific areas for action that parishioners identified as most important in 2004. These and other changes are noted below:

Action	Achievements
The need for affordable housing at each stage of life	Affordable family housing built at Dunmore Meadow, complementing the starter homes at Butts Furlong.
The lack of public transport, the impact of traffic and bad road conditions and road safety	Introduction of speed limits: 30mph in the village; 50mph on the B4494 at The Holt. Bus shelter at the village hall for school children.
The need to safeguard the parish heritage and manage its environment	Clearing and maintenance of Dunmore Pond Adoption and repainting of the BT phone box in Ash Close Restoration of the war memorial
The need for parish-based sports and games facilities for all	New equipment, seating and fencing in the play area A new hard surface cricket strip Sports equipment including children's rugby kit, basketball hoop, table tennis table and football goal
Enhancing the parish centre, making it more suitable for leisure and sporting activities	Additional facilities and storage for local groups e.g. shed for the pre-school Reinstatement of shower facilities in the village hall Activities for young people e.g. SPLAT and street dancing
The lack of parish services	Parish Council funding of laptops for the school
Assisting the parish economy	Introduction of broadband New Parish Council notice board at the village hall Village website

During the life of the last plan some parish services have declined or stopped e.g. Mr Batt's mobile meat and vegetable delivery.

The Action Plan 2010 - 2015

Our outline action plan is set out below. This is agreed with West Berkshire Council who will support its implementation. Our priority is to recruit volunteers where appropriate to help in this process. Some actions have already started, indeed a few are already finished! Most, however, are on-going and need support and backing from the community.

A more detailed action plan is available on the Brightwalton website at www.brightwalton.org.uk

West Berkshire has developed a template that it requires communities to use in describing their parish action plans. This asks communities to consider their needs and aspirations under the five headings aside.

- *A Stronger Community*
- *A Greener Community*
- *A Safer Community*
- *A Healthy Community*
- *A Prosperous Community*

How you can help

A large number of people volunteered via the survey to help with various projects.

A key action is to channel this volunteer energy into groups of interested parties who can evaluate the proposed actions and turn projects into reality.

If you would like to make a difference to life in Brightwalton, please contact any member of the Parish Council or check the website at www.brightwalton.org.uk to find existing lead volunteers.



1. A Stronger Community

i) Communication

75% say communication is good or adequate

We generally feel that communication within the parish is good or adequate (about 75%), particularly from the Parish Council (about 70%). The same cannot be said for West Berkshire Council, which scored 51% in these categories.

The Brickleton News is singled out as the most read communication, by 80% regularly and 13% occasionally.

Few people express any specific expectations of the Parochial Church Council. A few more, but still low numbers, have expectations of the Parish Council, mainly as a voice for the parish, enhancing community spirit and discussing planning issues.

Actions to improve communication

- **Strengthen the Brickleton News and the village website to ensure parish activities and events are widely publicised.**
- **Use e-mail to communicate to those parishioners who are online – but make sure those who are not do not miss out on information.**
- **The Parish Council and the Parochial Church Council need to make the parish more aware of their roles.**
- **Find ways to improve communication with West Berkshire Council so that our needs are met and our views are taken into account.**

Successful outcomes

- Parishioners feel that communication within the parish is good, using the most suitable means of communication for each individual.
- Parishioners understand the role of the Parish Council and Parochial Church Council, and how these councils benefit the parish.
- The Parish has more influence over the actions of West Berkshire Council.



ii) Services

From the survey results, people are generally aware of the services available in the parish, even if they don't use them. Some were unaware of the paper delivery, the milkman, the coal delivery and the prescription service. Few people use the mobile library and there is also low usage of the mobile school library.

The ideas put forward to improve services are quite popular - nearly half like the ideas of an oil syndicate and countryside conservation, and about a third like the suggestions of of an outdoor classroom, orchard and removal of excess green waste.

Actions to improve services

- **Improve people's awareness (particularly those new to the village) and use of existing services by running publicity campaigns or encouraging others to do so e.g. West Berkshire Council to promote the mobile library.**
- **Set up a volunteer group to investigate the possibility of an oil syndicate.**
- **Identify what services are needed by those who are more dependent on village services and work to make these available.**
- **For community fruit trees and countryside conservation see A Greener Community below.**

Successful outcomes

- Increase in use of available services
- New services identified, implemented and used



Current village services include

Prescription collection point (suspended at time of publication)

Mobile library

Deliveries of:

Milk & provisions

Newspapers

Coal

People like the idea of:

An oil syndicate

Countryside conservation

Outdoor classroom

Community fruit trees

Removal of excess green waste

iii) Development

A "living parish" which acknowledges change but in a way sympathetic to the character of the village.

Nearly 20% like the new houses at Dunmore Meadow. 10% of parishioners think that there has been no negative development in the parish in the last five years and another 10% think development has been "sensitive" or actually improved the parish.

Comment was made by several people that the new houses were not being allocated to those with strong connections to the parish.

65% support the development of a Village Design Statement, another 18% want to know more and there are also offers of help to develop it. There were 30 different suggestions as to what to include in the Design Statement! 10% suggest looking at sustainable issues, while other areas include trees and planting, rights of way, open spaces and playing areas.

Actions to improve development decisions

- **Develop a Village Design Statement to include sustainable issues.**
- **Follow up issue of allocation of new affordable housing with West Berkshire Council.**



Successful outcomes

- Village Design Statement completed and exerting influence on planning decisions.
- Affordable housing allocated only to those with village connections.

iv) Leisure and social facilities

The annual Fete, the Xmas Fayre and, to a lesser extent, the Welcome to the Village Party, are events in the Brightwalton social calendar that we value.

In terms of new activities, most of us would prefer occasional events rather than regular clubs or activities. Such social events would be one way of tackling the “no pub” issue.

For children (aged 1 – 10), the play park is by far the most popular activity. There is interest in all the future activities proposed, excluding a film club. These include: cookery, crafts, dance and drama, music, nature exploration and wildlife survey. Other suggestions were: cycling, clubs such as Brownies and Scouts, after school clubs.

Amongst the 7 responses from young people between the ages of 11 and 17, there is some enthusiasm for a film club and a Youth Cafe, plus suggestions for a multi-sports court and activity park.

Most of us enjoy coming to the fete – it really brings everyone together.

But, we need more people to volunteer and take ownership or we risk losing it.

50% like the idea of occasional quiz nights, film clubs & Friday night events.

30% like the idea of race nights and organised walks.

New activities suggested:
Family games, cookery lessons, a book club, painting, summer BBQ with jazz, sports eg badminton, cycling, tennis, archery, climbing, volleyball, yoga, tai-chi.

Actions to improve leisure and social facilities

- **Focus on the Fete as the key annual parish event by extending the organising committee to a wider group to implement new ideas.**
- **Create, and circulate regularly, a more comprehensive social calendar, including occasional activities.**
- **Bring together the people who expressed an interest in organising and running proposed new social events.**
- **Bring together the people who expressed an interest in organising and running proposed new children’s activities.**
- **Bring together sufficient volunteers to make the Xmas Fayre an annual event.**
- **Investigate the feasibility of holding Open Garden events.**
- **Involve young people in village decisions and seek regular feedback.**

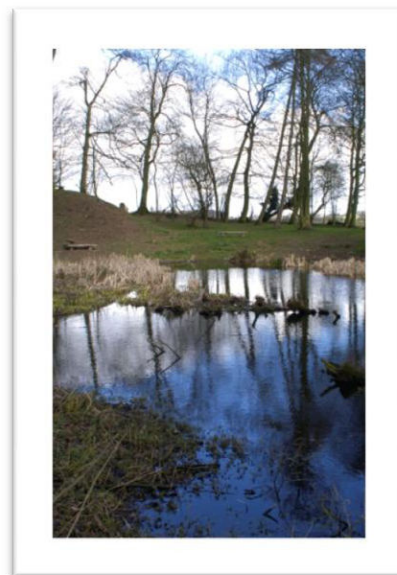
Successful outcomes

- A sustainable Fete committee to ensure the continued success of the Fete.
- Regular, well attended activities and events.
- An increase in active organisers.
- Parishioners are aware of all village activities through regular communication.

2. A Greener Community

Well over half of us support the idea of parish-wide renewable energy initiatives or are interested in knowing more. Many people volunteered to be part of this.

Brightwalton is in an officially designated Area of Outstanding Natural Beauty (AONB). As such, all authorities down to Parish Council level are required, when exercising or performing any functions affecting land in the area to "have regard to" conserving and enhancing the AONB. There is considerable interest in countryside conservation and planting community fruit trees.



Actions to create a greener environment

- **Support and help develop Rural Renewal Energy initiatives (e.g. wood fuel boiler for the Church, School and Village Hall). Bring together volunteers to do this.**
- **Bring together people interested in community fruit trees to action this.**
- **Work with the North Wessex Downs AONB, where appropriate, and bring together people interested in countryside conservation to identify and implement specific actions.**
- **Create a new working party for Dunmore Pond.**

Successful outcomes

- Community buildings adopt commercially viable green energy.
- Enhanced conservation of local countryside and village environment, particularly tree planting and care and upkeep of Dunmore Pond.



3. A Safer Community

Almost 100% of us feel safe or generally safe in the parish – and we need to protect this.

But over 80% have major or minor concerns about roads – speeding, maintenance, gritting and flooding.



Actions to create a safer community

- **Parish Council to make West Berkshire Council aware of our dissatisfaction with road maintenance and speeding issues and to lobby them or other relevant authorities to address these concerns.**
- **Brightwalton School to be engaged to resolve the issue of speeding at school drop off and pick up times.**
- **Working group to be set up to look at issue of safety in the parish in the next five years including liaison with appropriate organisations e.g. Neighbourhood Watch, Police**

Successful outcomes

- Road maintenance improved, with fewer complaints.
- Reduced level of speeding.
- High level of sense of safety and security in the parish to be maintained.



4. A Healthy Community

There is significant interest in self-guided walks or occasional organised walks to take advantage of our surrounding countryside but there is little interest in sports clubs or other activities.

Actions to create a healthier community

- **Create and distribute a “Three Walks around Brightwalton” brochure with support from the North Wessex AONB.**
- **Repeat the Walking the Bounds walk of 2000, which was very popular.**



Successful outcomes

- Brightwalton Walks brochure produced.
- Possibility of Walking the Bounds investigated.

5. A Prosperous Community

The number of businesses in Brightwalton is very low but homeworking has increased with this trend likely to continue. The use of broadband is very high (over 90%) and most of us feel it is essential to increase the speed of access for education, leisure and work.

Actions to create a prosperous community

- **Inform parishioners about what actions they can take to increase the speed of their broadband.**
- **Ensure that decisions and actions taken support those who are more dependent on local services to have a good standard of living.**

Successful outcomes

- Parishioners achieve highest possible broadband speed.
- Brightwalton supports people with greater needs to stay in the village.

Appendix

The Refresh process

A working party of 8 volunteers from the parish was set up to review the existing plan, with support from the Community Council for Berkshire. Pupils at Brightwalton School were enlisted to create a model of the parish and give their views on living in Brightwalton. At the 2009 Christmas Fayre, this model was used to encourage parishioners to give their opinions on life in the parish. Individual interviews using video were also held with older people. This information was used to create a questionnaire which was distributed around the parish in the summer of 2010.

A total of 91 questionnaires were completed by those aged 18 and upwards, which represents nearly 37% of the 247 people on the electoral roll: there was no apparent bias in responses from any particular group. Those who responded represented a fairly even spread by age and by length of residence. Questionnaires were also circulated to residents of Catmore and Lilley for whom Brightwalton is their nearest community centre. Four questionnaires were returned.

A separate questionnaire was distributed to those aged 11 – 17 and 7 responses were received. Speak Out events were organised by the Berkshire Association of Clubs for Young People (BACYP) to gauge the views of young people in the parish.

Acknowledgements

In putting together this Parish Plan refresh, the following people are thanked for their hard work and effort:

- The Parish Plan Refresh Team: Anna Britnor Guest, Jackie Boxall (Chair), John Hall-Craggs, Andrew Racher, Fiona Racher, Sue Sayers and David Williams.
- Distributors and collectors of the questionnaire, including the Parish Plan team, Parish Councillors and David Gardiner who represented Catmore and Lilley.
- Sarah Ward of the Community Council for Berkshire who provided support and guidance throughout the process.
- Greenham Common Trust, especially Melissa Elliot, who helped with the questionnaire design, production, data input and analysis.
- BACYP, particularly Tanya Honor, who led the Speak Out sessions.
- All those who took the time to complete the questionnaire.
- All volunteers now involved in implementing the actions from the plan.
- Brightwalton School and pupils who helped with creating a model of the village and providing suggestions for activities.

Want to volunteer or get more information?

If you'd like more information about anything in this Plan please either:

- Contact any member of the Parish Council.
- Go to the Brightwalton website at www.brightwalton.org.uk to find the latest action plans and volunteer groups.



**This Plan was produced by a team of volunteers on behalf
of Brightwalton Parish Council**

For more information visit

www.brightwalton.org.uk

PARISH ACTION PLAN TEMPLATE									
Name of Parish		Brightwalton							
Objective	Actions	Priority	Start Date	Planned Finish Date	Project Manager/Lead Partner	Other Partners	Justification/comments (refer to community support from consultation)	Completed (Give Date)	Sustainable Communities Strategy Theme (in this column put Safer, Prosperous, Healthy, Greener or Accessible)
Stronger									
Improve communication in order to increase community spirit, use of services and participation	Strengthen Brickleton News and Website	H	1 November 2010	On-going	Mike Ananin and David Akerman	Parish Council	Read by 80% regularly and 13% occasionally		Stronger
	Use e-mail for communication	M	1 November 2010	On-going	Mike Ananin and David Akerman				Stronger
	Replace dilapidated notice boards	M	1 November 2010	End November 2010	Parish Council		Comments made by parishioners	End November 2010	Stronger

	Ensure all notice boards kept current	L	1 November 2010	On-going	Parish Council		Comments made by parishioners		Stronger
	Parish Council makes parishioners more aware of role	L	1 January 2011	On-going	Parish Council		Medium to low awareness of Parish Council role		Stronger
	Parochial Church Council makes parishioners more aware of role	L	10 November 2010	On-going	Reverend John Townsend	Parochial Parish Council	Low awareness of PCC role		Stronger
	Improve communication with West Berkshire Council	M	1 December 2010	On-going	Parish Council	West Berkshire Council and local councillor	Only 51% awareness of role of West Berkshire Council		Stronger
Increase awareness of existing services	Publicity campaign	M	1 December 2010	On-going	John Hall-Craggs	Mike Ananin and David Akerman	Low usage of existing services		Stronger

Create new services	Investigate oil syndicate	M	1 January 2011	01 June 2011	TBD		Requested by nearly 50%		Stronger
Ensure all development in parish is carried out in a sensitive and sympathetic manner	Develop Village Design Statement	H	1 December 2010	01 June 2011	David Williams	Parish Council Volunteer team	65% supported Village Design Statement		Stronger
	Ensure allocation of affordable homes goes to village priorities	H	1 November 2010	On-going	Parish Council	West Berkshire Council and local councillor	Comments made by parishioners		Stronger
Investigate new social activities and events	Create and circulate a comprehensive social calendar	M	1 February 2011	On-going	Anna Britnor-Guest	Existing event organisers Village Hall Committee PCC Hall users	Comments made by parishioners		Stronger
	Organise new social events and activities	M	1 January 2011	On-going	Volunteer team		Comments made by parishioners		Stronger

	Organise new social events and activities for Children	M	1 January 2011	On-going	Volunteer team		Comments made by parishioners		Stronger
	Extend organising committee of Fete	M	1 May 2011	On-going	John Adams		75% take part in Fete		Stronger
	Extend support to Xmas Fayre	L	Summer 2011	On-going	Parochial Parish Council		40% take part in Xmas Fayre		Stronger
	Hold Open Gardens event	L	Summer 2011	TBD	Volunteer team		Comments made by parishioners		Stronger
	Strive to create young people's sounding board e.g. open forum	M	1 January 2011	On-going	Parish Council				Stronger
Greener									

Create parish-wide renewable energy initiative	Complete bio-mass boiler project	H	Spring 2010	On-going	Keith Richards	Support team of PCC, School and interested villagers	Over 80% interested in project or in finding out more.	Greener
Enhance countryside environment	Create orchard	M	Summer 2011	Winter 2011	Parish Council	Volunteer team	33% supported planting trees	Greener
	Create working party for Dunmore Pond	M	1 December 2010	On-going	Neal Rainbow	Volunteer team	Comments made by parishioners	Greener
	Investigate countryside conservation initiatives	M	Spring 2011	On-going	Parish Council	Volunteer team	Comments made by parishioners	Greener
Safer								
Ensure West Berkshire Council maintain roads in best possible condition	On-going dialogue with Council to ensure good road maintenance	H	1 December 2010	On-going	Parish Council	West Berkshire Council and local councillor	80% said road maintenance either a major or minor problem	Safer

Ensure enforcement of speeding regulations in village and along B4494	Liaison with police and West Berks Council	H	1 December 2010	On-going	Parish Council	Police and West Berkshire Council	85% said speeding in the village is a major or minor problem. 79% said speeding on the B4494 is a major or minor problem	Safer
Maintain feeling of safety in the parish	Liaison with School re speeding parents	M	1 January 2011	On-going	Parish Council	Brightwalton School	85% said speeding in the village is a major or minor problem	Safer
Maintain feeling of safety in the parish	Set up working group to examine safety issues	L	Summer 2011	On-going	Parish Council	Team of volunteers	Nearly 100% feel "safe" or "generally safe". We need to maintain this excellent rating	Safer
Healthy								
Promote walking as a leisure and health activity	Produce self-guided walks brochure - "Three Walks around Brightwalton"	H	Summer 2010	End January 2011	Jackie Boxall	Oliver Cripps of North Wessex AONB Management Committee	55% would follow the walks regularly or occasionally	Healthier
Prosperous	Redo the Walking of the Bounds walk	L	Summer 2011	TBD	John Hall-Craggs	David Gardiner	36% were interested in organised walks	Healthier
Prosperous								

Increase usefulness of broadband usage	Put articles in Brickleton News on how to improve broadband speeds	M	September 2010	September 2010	John Draper	Mike Ananin	Use of broadband over 90% and very important for work, education and leisure	First article appeared September 2010 issue of Brickleton News	Prosperous
--	--	---	----------------	----------------	-------------	-------------	--	--	------------

This page is intentionally left blank